

Flashings for Metal Roofs



Dektite® Original

The Original watertight Flashing for Metal Roofs

The original watertight flashing for hot or cold flues and pipes on metal roofs. A tough weathertight seal and a strong flexible base.

Pipe External	Roof Pitch	Base Size Ø	Code	
			Grey EPDM	Red Silicone
0-35mm	0-45°	92mm	DF100	-
5-65mm	0-40°	121mm	DF101	DF201
45-80mm	0-40°	156mm	DF102	DF202
5-127mm	0-40°	196mm	DF103	DF203
73-160mm	0-40°	238mm	DF104	DF204
108-190mm	0-40°	272mm	DF105	DF205
125-230mm	0-40°	318mm	DF106	DF206
150-280mm	0-40°	368mm	DF107	DF207
175-330mm	0-40°	418mm	DF108	DF208
254-483mm	0-40°	642mm	DF109	DF209



Dektite® Premium

Perfect for Flashing Pipes on Metal Roofs

The multi-application flashing in a highly durable EPDM or silicone, edged with a flexible aluminium band, flashes hot or cold flues and pipes on metal roofs. The square base fits any prepared hole on most roof profiles.



Dektite® Mini
for small penetrations

Pipe External	Roof Pitch	Base Size	Code		
			Black EPDM	Grey EPDM	Red Silicone
0-35mm	0-45°	100 x 100mm	DFE100B	DFE100G	DFE200RE
5-55mm	0-45°	139 x 139mm	DFE101B	DFE101G	DFE201RE
5-76mm	0-45°	178 x 178mm	DFE102B	DFE102G	DFE202RE
5-127mm	0-45°	221 x 221mm	DFE103B	DFE103G	DFE203RE
75-175mm	0-45°	280 x 280mm	DFE104B	DFE104G	DFE204RE
100-200mm	0-45°	310 x 310mm	DFE105B	DFE105G	DFE205RE
125-230mm	0-45°	363 x 363mm	DFE106B	DFE106G	DFE206RE
150-300mm	0-45°	456 x 456mm	DFE107B	DFE107G	DFE207RE
170-355mm	0-45°	496 x 496mm	DFE108B	DFE108G	DFE208RE
230-508mm	0-45°	681 x 681mm	DFE109B	DFE109G	DFE209RE

*For use in solar applications



Dektite® EZi-Seal™

Forget the Silicone - Just screw it down

Features a revolutionary non-absorbant and non-porous sponge gasket that seals by compression, even in wet conditions, it hugs the roof line to provide a watertight seal without the need for silicone sealant

Pipe External	Roof Pitch	Base Size	Code
			Black EPDM
0-35mm	0-45°	100 x 100mm	DFE100BEZ
5-55mm	0-45°	139 x 139mm	DFE101BEZ
5-76mm	0-45°	178 x 178mm	DFE102BEZ
5-127mm	0-45°	221 x 221mm	DFE103BEZ
75-175mm	0-45°	280 x 280mm	DFE104BEZ
100-200mm	0-45°	310 x 310mm	DFE105BEZ
125-230mm	0-45°	363 x 363mm	DFE106BEZ
150-300mm	0-45°	456 x 456mm	DFE107BEZ
170-355mm	0-45°	496 x 496mm	DFE108BEZ
230-508mm	0-45°	681 x 681mm	DFE109BEZ

Flashings for Metal Roofs

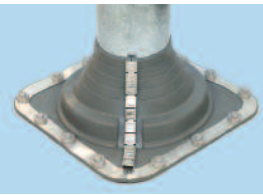


Dektite® Diverter

For Hi/Low Roof Pitches

No ponding or damming! The large base of the Dektite® Diverter dramatically reduces and diverts rain water back up that can occur on very low or high pitched roofs and deep ribbed roofing profiles. No need to cut around pipes, just quick straight lines for the square base.

Pipe External	Roof Pitch	Base Size	Code	
			Grey EPDM	Red Silicone
75-155mm	0-60°	410 x 360mm	DF602	DF702
114-254mm	0-60°	485 x 460mm	DF603	DF703
254-406mm	0-60°	708 x 635mm	DF605	DF705
380-610mm	0-60°	1006 x 905mm	DF606	DF706
235-425mm	0-40°	750 x 660mm	RFS4	-



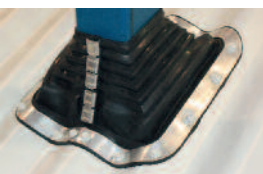
Dektite® Combo

Flash over or around

Use as standard Dektite®, or when retrofit is required, cut and fit around pipe and join with clips (supplied).

Pipe External	Roof Pitch	Base Size	Code		
			Black EPDM	Grey EPDM	Red Silicone
5 - 60mm	0-40°	139 x 139mm	DC101BC	DC101GC	DC201REC
45 - 85mm	0-40°	177 x 177mm	DC102BC	DC102GC	DC202REC
5 - 127mm	0-40°	218 x 218mm	DC103BC	DC103GC	DC203REC
75 - 175mm	0-40°	285 x 285mm	DC104BC	DC104GC	DC204REC
108 - 190mm	0-40°	365 x 365mm	DC105BC	DC105GC	DC205REC
125 - 230mm	0-40°	365 x 365mm	DC106BC	DC106GC	DC206REC
150 - 280mm	0-40°	454 x 454mm	DC107BC	DC107GC	DC207REC
175 - 330mm	0-40°	454 x 454mm	DC108BC	DC108GC	DC208REC
240 - 503mm	0-40°	685 x 685mm	DC109BC	DC109GC	DC209REC
350 - 760mm	*	995 x 965mm	DC110BC	-	DC210REC

* 350 - 500mm cut - the roof pitch is 30° maximum
500 - 760mm cut - the roof pitch is 15° maximum



Dektite® Combo Square

Specifically designed for square penetrations from 20mm - 120mm. Suitable for standard or retrofit applications.

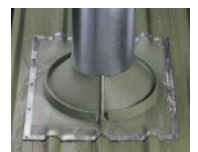
Pipe External	Roof Pitch	Base Size	Code
			Black EPDM
20 - 125mm	0-45°	216 x 216mm	DCS103C



Dektite® Retrofit™

For repairs and difficult-to-access pipes

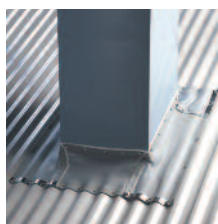
Purpose designed for flashing roof penetrations where the flashing cannot be lowered over the pipe, but needs to go around. The unique patented zip lock does not require separate clips - just clamp it together! Also available with a diverter tray.



Dektite® Retrofit™ Diverter

Pipe External	Roof Pitch	Base Size Ø	Code		
			Black EPDM	Grey EPDM	Red Silicone
20-70mm	0-40°	160mm	RF801B	RF801G	RF901RE
50-185mm	0-40°	273mm	RF802B	RF802G	RF902RE
85-255mm	0-40°	369mm	RF803B	RF803G	RF903RE
235-425mm	0-40°	750 x 660mm	-	RFS4	-

Flashings for Metal Roofs

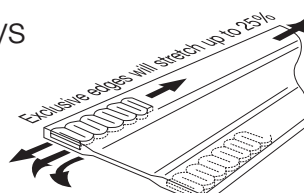


Ideal for flashing square ducts and chimneys

Dekstrip® Flashing

Stretches to any shape, Seals and Stays

The unique and patented internal aluminium strip allows the forming of almost any shape to seal and waterproof. Use with butyl mastic sealant and self-drilling screws to seal pipes, ducts, skylights, chimneys, bullnose and curved roofing profiles.



Great for large round pipes



Excellent for curved profiles

Width	Length	Code
180mm	23m	DS23-180
235mm	10m	DS10-235
305mm	10m	DS10-305
450mm	15m	DS15-450
235mm	3m	DS3-235



Dektite® fixing kits

Dektite® fixing kits are designed for use with Deks EPDM and Silicone flashings on metal roofs. The DFK1 kit (As shown) contains 1 x 75ml tube of low modulus Silicone, 25 x self-drilling screws, 25 x colour caps (silver) 1 x fixing instruction leaflet.

The DFK2 kit contains 3 x 75ml tube of low modulus silicone, 75 x self-drilling screws, 75 x colour caps (silver) and 1 x fixing instruction leaflet.

On the back page of the instruction leaflet is a table which indicates which kit is required for each size of flashing.

Code
DFK 1
DFK 2



Dektite® flashing adhesive

Dektite® flashing adhesive is a one part Polymer hybrid engineering grade adhesive with primerless adhesion to most substrates and is formulated to adhere Dektite® EPDM & Silicone flashings. The adhesive reacts to atmospheric moisture to produce a long life polymer hybrid rubber joint that is resistant to UV and will remain permanently flexible.

Temperature range: -50°C to +165°C

Code
DFA050RE-2

Flashings for Flat Membrane and Bitumen Roofs



FlatSeal™

Ideal for Flat and Low pitch Roofs with Single Ply or Bitumen Coverings

No special tools or fittings are needed - FlatSeal™ EPDM snaps tight to pipe without clips. Seals to roof with hot or cold liquid bitumen - refer to FlatSeal™ brochure for installation guide. Black EPDM for maximum UV and Ozone resistance.

Pipe External	Base Size Ø	Code
25 - 175mm	345mm	Black EPDM FS25-175