

Flashings for Tile and Slate Roofs

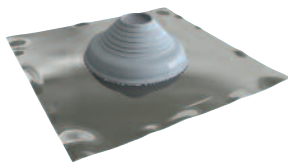


Seldek® Aluminium

Installs in a flash on Tile or Slate Roofs

The Seldek® Aluminium won't stain or corrode roofs and gutters. The EPDM cone, which is trimmed on site to fit, is ingeniously locked to a high grade and malleable 99.9% pure aluminium base. The fast economical way to flash a tile roof.

Pipe External	Roof Pitch	Base Size	Base Type	Code
12 - 70mm	0-45°	500 x 600mm	Aluminium	SDA100B
50 - 170mm	0-45°	500 x 600mm	Aluminium	SDA101B
110 - 200mm	0-45°	600 x 600mm	Aluminium	SDA102B
160 - 300mm	0-45°	764 x 764mm	Aluminium	SDA103B
300 - 450mm	0-45°	956 x 956mm	Aluminium	SDA104B

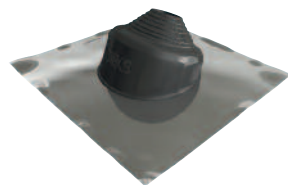


Seldek® Aluminium High Temperature

Installs in a flash on Tile or Slate Roofs

The Seldek® Aluminium won't stain or corrode roofs and gutters. The grey silicone cone will withstand constant temperatures at the roofline of 200°C and up to 250°C intermittently

Pipe External	Roof Pitch	Base Size	Base Type	Code
110 - 200mm	0-45°	600 x 600mm	Aluminium	SDA202G
160 - 300mm	0-45°	764 x 764mm	Aluminium	SDA203G



Seldek® Aluminium Pitched

Installs in a flash on Tile or Slate Roofs

The Seldek® Aluminium won't stain or corrode roofs and gutters. The pitched design allows for a less distorted cone when fitted to steeper pitches.

Pipe External	Roof Pitch	Base Size	Base Type	Code
150 - 280mm	20-45°	764 x 764mm	Aluminium	SDAP203G

Pipe External	Roof Pitch	Base Size	Base Type	Code
150 - 280mm	20-45°	764 x 764mm	Aluminium	SDAP103B



Seldek® Nu-Lead®

No more concern about Unprotected Lead

Seldek® Nu-Lead® has been developed for use where the handling of lead and associated environmental issues are of concern. Combines a long-life, weather-resistant EPDM cone with a grey primed acrylic coated lead base. The unique thermo-baked coating does not affect the lead's malleability, and prevents leaching onto the roof and into gutters, downpipes and the water table.

Pipe External	Roof Pitch	Base Size	Base Type	Code
12 - 70mm	0-45°	490 x 410mm	Nu-Lead	DNL101B
50 - 170mm	0-45°	600 x 450mm	Nu-Lead	DNL103B
175 - 330mm	0-45°	850 x 550mm	Nu-Lead	DNL108B