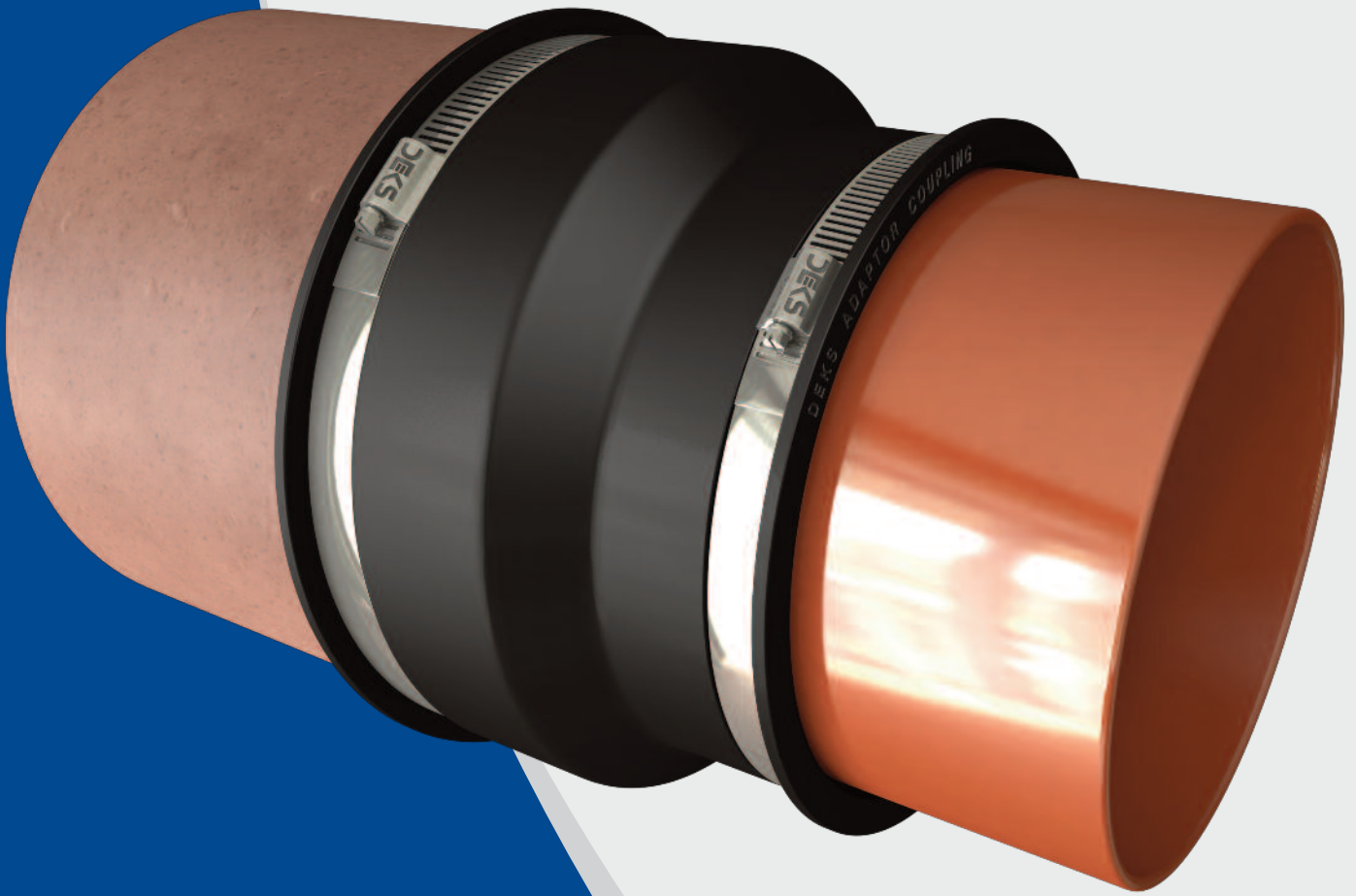


# BAND-FLEX

## EPDM Flexible Couplings



**DEKS**  
Easy to Work With

[www.deks.co.uk](http://www.deks.co.uk) | [sales@deks.co.uk](mailto:sales@deks.co.uk) | 01275 858866

# BAND-FLEX

## Metal banded flexible couplings, adaptors and bushes

Buried drain or sewer systems for the conveyance of wastewater (including domestic wastewater, surface water and rainwater) under gravity and periodic hydraulic surcharge or under continuous low head of pressure.

### About us

Deks Industries have over 50 years' experience producing, manufacturing and distributing rubber goods. As we manufacture all EPDM rubber couplings from our own compounds in a central location we can offer significant cost benefits to new and existing customers. Our Band-Flex couplings are fully tested to BS EN 295-4 2013.



From our Nailsea, Bristol based warehouse we distribute goods to over 15 countries including eastern and western Europe. Being close to the motorway network means we have great transport connections allowing us to quickly service our customers.

### Quality Statement

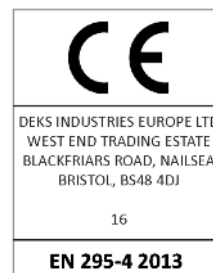
Deks "Band-Flex" Flexible Couplings are manufactured to comply with the European Harmonised Standard BS EN 295-4 2013. Deks "Band-Flex" Flexible Couplings have been independently tested against this standard and have passed all the relevant tests in that standard. This enables Deks Industries Europe Ltd to market these construction products under the European Construction Directive (88/109/EEC) Clauses and characteristics for compliance. Customers can be confident that Deks "Band-Flex" Flexible Couplings offer the best possible quality on the market, and are fit for purpose and also carry our lifetime guarantee (subject to correct installation).

### Standards Applicable

BS EN 295-4 (2013)  
BS EN 681-1 Part 1, BS EN 10088-2 (2005), ISO 3302-1 (1996), ISO/TS 16949

### ISO/TS 16949

ISO/TS16949 incorporates all elements from ISO 9001 with further additions. Including addition supply chain benefits and waste management.



16



## Pipe Couplings

Used to connect pipes where minimal shear and deflection conditions exist on site. EPDM pipe couplings are designed to connect pipe of a similar material and, or size. Couplings have been extensively tested for above ground and below ground usage applications.

Min OD - Max OD	Item Code
100-115	DPC115
110-125	DPC125
120-137	DPC137
125-150	DPC150
150-165	DPC165
160-180	DPC180
175-200	DPC200
225-250	DPC250
250-275	DPC275
265-290	DPC290



## Adaptor Couplings

These couplings provide an excellent and cost efficient method of jointing two pipes with differing diameters without the use of bushes. Adaptor connectors are available in sizes up to 420mm.

From	To	Item Code
105 - 114	135 - 142	DAC4000
155 - 165	195 - 198	DAC6000
137 - 152	100 - 115	DAC1371
190 - 215	150 - 165	DAC1904
100 - 110	32 - 40	DAC3211
70 - 88	60 - 76	DAC0881
130 - 145	110 - 125	DAC1302
144 - 160	110 - 122	DAC1442
144 - 160	121 - 136	DAC1443
155 - 176	110 - 125	DAC1552
155 - 170	130 - 145	DAC1553
170 - 192	110 - 122	DAC1704
170 - 192	121 - 136	DAC1705
170 - 192	144 - 160	DAC1706
180 - 200	130 - 145	DAC1800
180 - 200	155 - 170	DAC1803
180 - 200	160 - 180	DAC1804
183 - 198	100 - 115	DAC1831
185 - 216	160 - 180	DAC1851
185 - 212	100 - 115	DAC1852
190 - 206	100 - 115	DAC1901
190 - 215	150 - 165	DAC1904
200 - 225	160 - 175	DAC2001
210 - 235	110 - 122	DAC2102
210 - 235	121 - 136	DAC2103
210 - 235	144 - 160	DAC2104
210 - 235	170 - 192	DAC2105
210 - 235	190 - 215	DAC2106
240 - 265	144 - 160	DAC2404
240 - 265	170 - 192	DAC2405
240 - 265	190 - 215	DAC2406
240 - 265	210 - 235	DAC2407
250 - 275	200 - 225	DAC2502
260 - 285	180 - 205	DAC2601
260 - 285	240 - 265	DAC2602
265 - 290	144 - 160	DAC2658
265 - 290	210 - 235	DAC2659
295 - 320	144 - 160	DAC2954
295 - 320	170 - 192	DAC2955
295 - 320	210 - 235	DAC2957
295 - 320	240 - 265	DAC2958
295 - 320	265 - 290	DAC2959
310 - 335	180 - 205	DAC3101
335 - 360	295 - 320	DAC3350
335 - 360	240 - 265	DAC3358
335 - 360	265 - 290	DAC3359
360 - 385	240 - 265	DAC3601
360 - 385	265 - 290	DAC3602
360 - 385	300 - 325	DAC3603
395 - 420	240 - 265	DAC3958
395 - 420	265 - 290	DAC3959



## Standard Couplings

Designed to be used where a full resistance to shear or deflection is required, made from quality EPDM rubber and 316 or 304 stainless steel end and center bands. Band-Flex Couplings have undergone rigorous long term tests. These couplings offer installers a peace of mind connection, and are expected to have a lifetime beyond the pipelines design life.

Min OD - Max OD	Item Code
100-115	DSC115
110-125	DSC125
120-137	DSC137
125-150	DSC150
150-165	DSC165
160-180	DSC180
175-200	DSC200
200-225	DSC225
225-250	DSC250
250-275	DSC275
265-290	DSC290
285-310	DSC310
295-320	DSC320
310-335	DSC335
320-345	DSC345
335-360	DSC360
345-370	DSC370
360-385	DSC385
370-395	DSC395
385-410	DSC410
400-425	DSC425
405-430	DSC430
420-445	DSC445
425-450	DSC450
440-465	DSC465
445-470	DSC470
465-490	DSC490
485-510	DSC510
500-525	DSC525
515-540	DSC540
525-550	DSC550
535-560	DSC560
545-570	DSC570
555-580	DSC580
575-600	DSC600
595-620	DSC620



## Large Standard Couplings

Deks can manufacture large diameter standard couplings up to 4m diameter. Made from superior specification rubber and stainless steel you can be sure of a great quality coupling with all the benefits of a peace of mind connection!

Min OD - Max OD	Item Code
600-700	DLC600
700-800	DLC700
800-900	DLC800
900-1000	DLC900
1000-1100	DLC1000
1100-1200	DLC1100
1200-1300	DLC1200
1300-1400	DLC1300
1400-1500	DLC1400
1500-1600	DLC1500
1600-1700	DLC1600
1700-1800	DLC1700
1800-1900	DLC1800
1900-2000	DLC1900
2000-3000	DLC2000
3000-4000	DLC3000



## EPDM Bushes

Band-Flex EPDM bushes are designed to be used with Band-Flex couplings when two connecting pipe diameters are significantly different. Contact Band-Flex Office to discuss your requirements.

Min OD - Max OD	Thickness (mm)	Item Code
170-199	8	DBC0801
200-299	8	DBC0802
300 - 399	8	DBC0803
400 - 499	8	DBC0804
500 - 599	8	DBC0805
600 - 699	8	DBC0806
700 - 799	8	DBC0807
800 - 899	8	DBC0808
900 - 999	8	DBC0809
1000 - 1099	8	DBC0810
1100 - 1199	8	DBC0811
1200 - 1299	8	DBC0812

Min OD - Max OD	Thickness (mm)	Item Code
190 - 199	16	DBC1601
200 - 299	16	DBC1602
300 - 399	16	DBC1603
400 - 499	16	DBC1604
500 - 599	16	DBC1605
600 - 699	16	DBC1606
700 - 799	16	DBC1607
800 - 899	16	DBC1608
900 - 999	16	DBC1609

Min OD - Max OD	Thickness (mm)	Item Code
250 - 299	24	DBC2402
300 - 399	24	DBC2403
400 - 499	24	DBC2404
500 - 599	24	DBC2405
600 - 699	24	DBC2406
700 - 799	24	DBC2407
800 - 899	24	DBC2408
900 - 999	24	DBC2409

Min OD - Max OD	Thickness (mm)	Item Code
400 - 499	32	DBC3204
500 - 599	32	DBC3205
600 - 699	32	DBC3206
700 - 799	32	DBC3207
800 - 899	32	DBC3208
900 - 999	32	DBC3209



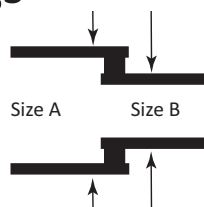
## End Caps

Band-Flex EPVC end caps are used as a temporary or permanent fitting, end caps can be used for preventing dirt penetration or when air testing waste or soil system.

Min OD - Max OD	Item Code
50 - 65	DEC50
75 - 90	DEC75
100 - 115	DEC100
150 - 165	DEC150
200 - 215	DEC200

## DACFX Adaptor Couplings

The DACFX is made to measure bushed adaptor coupling. Simply tell us the external diameter of both pipes and let us do the rest!



Carefully measure the ODs of both pipes and record the sizes below.

**DACFX -** \_\_\_\_\_ **Size A** - \_\_\_\_\_ **Size B**

Use the above reference to place your order

# Band-Flex Installation Guide

1. Pipes should be cut square ( ensure 20mm gap exists for any inserted connection)
2. Slide couplings fully over cut to the face of the cut pipe place a mark on visible pipe
3. Insert or butt joints together up to 20mm gap is allowable
4. Slide the coupling over the joint so that 50% of the width covers each pipe end
5. Measure the gap from the mark
6. On Standard couplings tighten centre band 1st then end bands in turn
7. Use an 8mm nut driver for sizes up to and including 290mm (hand tight equals approximately 6Nmm force)
8. Use an 8mm Socket Wrench on sizes over 290mm a medium to firm force will exert approximately 12Nmm force
9. When using bushes to make up significant pipe size differentials, insert the bush or bushes on the pipe first and repeat the steps above 1-8



## Recommended Tools



For couplings under 290mm use an 8mm nut driver.  
Tighten the end bands and shear bands by hand to 6Nm.



For couplings over 290mm use an 8mm socket with a socket wrench.  
Tighten the end bands and shear bands by hand to 13Nm.

## Pipe table for nominal ODs of pipes from DN100-DN600 (Guidance only)

	Nominal Sizes (DN)													
	100	125	150	175	180	200	225	250	300	350	360	375	400	450
*HepSleeve/HepSeal/Densleeve/Denseal	130-133		186-190				269-278		364-380			451	480-492	522-544
SuperSleeve / Super Seal	122		178				263		357					
Concrete							286-305		375-425			457-520		525-590
PVCu	110		160			200		250	315				400	450
Ultra-Rib			170		200		250		335		400			
Quantum Highway / Sewer			160				250		330				465	
Ridgidrain	118		178				266		354			435	460	514
Polysewer / Ridgisewer			160				250		330				457	511
ABS	114.3		168.3	200		219.1		280	315					
Ductile Iron BSEN598	118		170			222		274	326	378			429	
Cast Iron SMU/Ensign/SML	112	137	162			212		276.5	328.5					
Cast Iron BS437 (Drain)	119		173				256							
Cast Iron BS416 (Soil)	114													
Cast (Spun) Iron BS1211 (A.B.)	121.9	149.9	177.3	204.7		232.2	259.1	286	333.8	386.6				
Cast (Spun) Iron BS1211 (C.D.)	121.9	149.9	177.3	204.7		232.2	259.1	286	345.4	399.3				
Grey Iron BS4622	118		170			222		274	326				429	480
Stainless Steel	110		160											
Polyethylene	111	126	161		181	201	226	251	317	357			402	453
Twinwall - PP/PE	119	150	178			235	268		355			429	455	514
Corrugated PVCu	110		170				250							
Pitch Fibre	125		181	238										
Asbestos Cement L	125		182	208		232	260	288						
Asbestos Cement M									339			423	437	484
Asbestos Cement H									346			429	440	490

## Deks Band-Flex Couplings Range design data

Type	mm	Hydrostatic Pressure Bar	mm	Clamping Band Torque Pressure
<b>Standard Couplings</b>	DSC115 - DSC620	1.2	DSC115 - DSC290	6 Nm
			DSC300 - DSC600	13 Nm
<b>Extra Wide Couplings</b>	DWC300 - DWC620	1.2	DWC300 - DWC600	13 Nm
<b>Bushes</b>				
DC08	170 - 620	1.2		
DC16	190 - 620	1.2		
DC24	250 - 620	1.2		
DC32	400 - 620	1.2		
<b>Large Couplings</b>	DSC601 - DSC1000	1	DSC601 - DSC1000	13 Nm
<b>Extra Wide Large Couplings</b>	DWC690 - DWC1000	1	DWC601 - DWC1000	13 Nm
<b>Bushes</b>				
DC08	621 - 1000 1			
DC16	621 - 1000 1			
DC24	621 - 1000 1			
DC32	621 - 1000 1			
<b>Large Couplings</b>	DSC1001 - DSC4000	0.6	DSC1001 - DSC4000	13 Nm
<b>Extra Wide Couplings</b>	DWC1001 - DWC4000	0.6	DWC1001 - DWC4000	13 Nm
<b>Bushes</b>				
DC08	1001 - 4000	0.6		
DC16	1001 - 4000	0.6		
DC24	1001 - 4000	0.6		
DC32	1001 - 4000	0.6		
<b>DAC Adaptor Couplings</b>	24 - 420	0.6	24 - 420	6 Nm
<b>DPC Pipe Couplings</b>	24 - 95	0.6	24 - 95	6 Nm
<b>DEC End Cap</b>	45 - 205	0.6	45 - 205	6 Nm
<b>EPDM Working Temp °C</b>	<b>Constant -20 to +80</b>		<b>Hi +100</b>	<b>Low -40</b>



t : 01275 858866  
f : 01275 855887  
e : sales@deks.co.uk  
w : www.deks.co.uk

Deks Industries Europe Ltd  
West End Trading Estate  
Blackfriars Road  
Nailsea, Bristol, BS48 4DJ

While every effort has been made to ensure that the details in this brochure are correct at time of print  
we cannot accept responsibility for any errors or omissions

C-BF 2/16